

# **Detroit Avenue Pedestrian and Bicycle Improvements**

## **City of Concord Project No. 2276**

### **Scope of Project:**

The Detroit Avenue Bicycle and Pedestrian Improvements will occur on the section of street from Clayton Road to Monument Blvd. It began in mid-August, 2015 and will be completed in September 2016, weather permitting.

The Project includes the following work:

- Installation of new storm drains and fiber optic conduit/pull boxes
- Concrete ADA ramp construction
- Tree removal and replacement
- Installation of buffered bicycle lanes
- Installation of 4-way stop signs
- Installation of street lights
- Installation of miscellaneous traffic signage and markings
- Repairs to/replacement of the following: asphalt pavement, concrete sidewalk, curb and gutter construction

### **Current Updates (as of August 19<sup>th</sup>):**

#### **Work progress as of August 19<sup>th</sup>:**

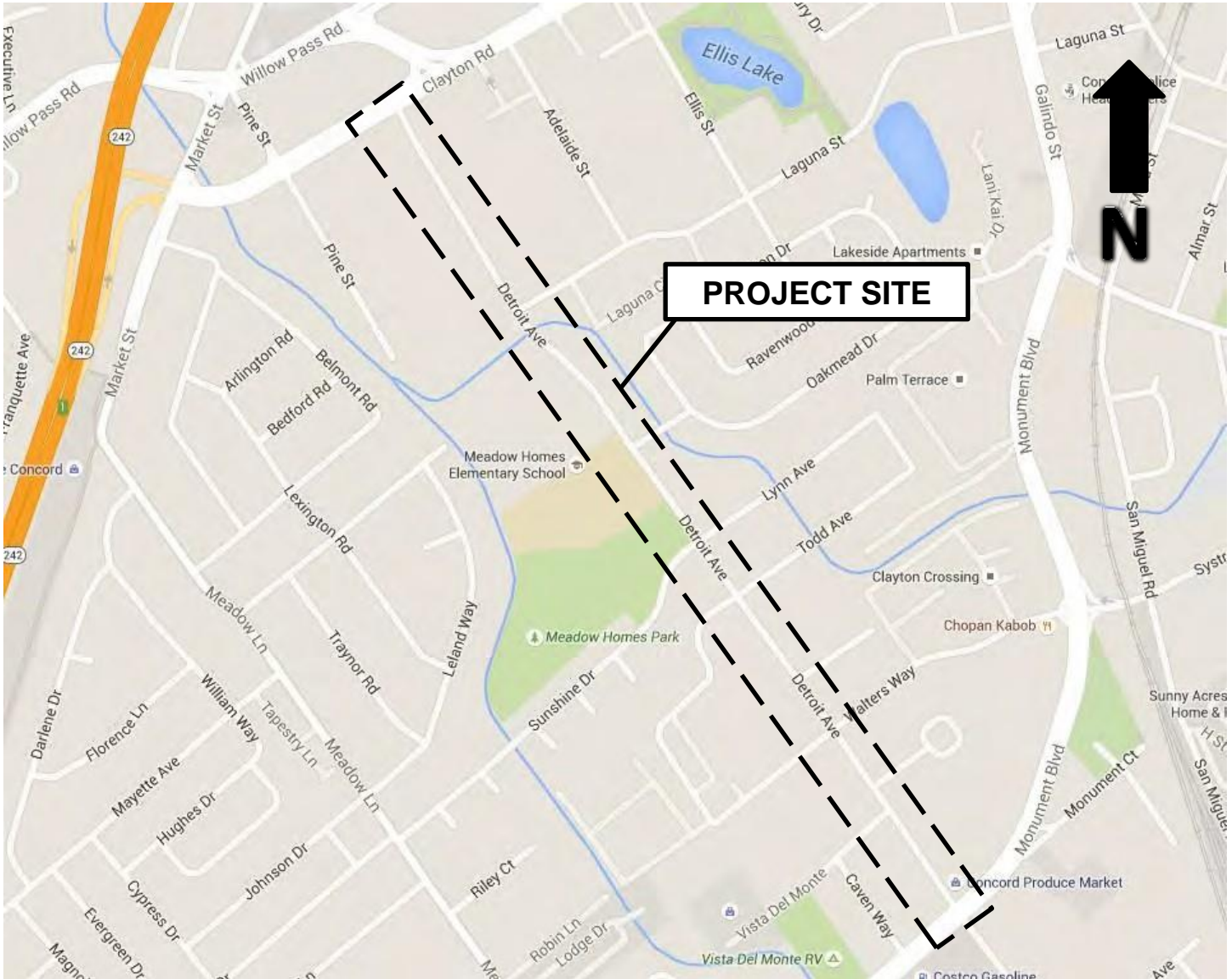
- Contractor completed installation of street trees
- Contractor working on punchlist items
- CCWD repaired water leak in street and installed temporary patch in street
- Contractor working punchlist items
- Contractor began work at driveway at Laguna intersection
- City continued interface with PG&E to determine when PG&E was going to install required box at Sunshine to facilitate completion of street activation process
- City and community began planning for ribbon cutting for project

#### **Projected work over the next month:**

- Contractor to complete work at the Laguna driveway
- CCWD to make permanent repairs to street
- City will continue its interface with PG&E to determine when PG&E will install required box at Sunshine to facilitate completion of street activation process
- City and community continues planning for ribbon cutting to be held on Saturday, September 24<sup>th</sup>; details to be announced

### **Next Update – approximately September 16<sup>th</sup>, 2016**

## LOCATION MAP



PROJECT NO. 2276  
DETROIT AVENUE PEDESTRIAN AND BICYCLE  
IMPROVEMENTS – CLAYTON ROAD TO MONUMENT BLVD  
NO SCALE

# CITY OF CONCORD

DETROIT AVENUE COMPLETE STREETS

## FEDERAL AND LOCAL DOLLARS AT WORK

### PROJECT IMPROVEMENTS:

- Sidewalk, curb and gutter construction
- Curb ramp accessibility upgrades
- Drainage repairs
- Streetlight installation
- Localized pavement repairs/ crack sealing
- Asphalt paving and slurry seal
- New pavement striping
- Buffered bike lanes and bike-related signs

### Mejoramientos del Proyecto:

- Construcción de banqueta, bordillos y cunetas
- Actualizaciones de accesibilidad de rampa de banqueta
- Reparaciones del drenaje
- Instalación de luces de la calle
- Reparaciones de pavimento localizadas/capa de sello de grietas
- Pavimentación de asfalto y capa de sello
- Nuevas rayas de pavimento
- Carriles de bicicletas reguladas y letreros relacionados con las bicicletas

Before

After

# CITY OF CONCORD

DETROIT AVENUE COMPLETE STREETS

## FEDERAL AND LOCAL DOLLARS AT WORK

### QUESTIONS?

City Project Manager

Preguntas?

Gerente del Proyecto de la Ciudad Mark  
Migliore

[Mark.Migliore@cityofconcord.org](mailto:Mark.Migliore@cityofconcord.org)

(925) 671-3422

### PROJECT INFORMATION

Visit the City website at

<http://cityofconcord.org/detroitave>

Información del Proyecto

Visita la página web de la Ciudad



# CITY OF CONCORD

DETROIT AVENUE COMPLETE STREETS

## FEDERAL AND LOCAL DOLLARS AT WORK



### VICINITY MAP

Mapa de la Zona

### CONSTRUCTION PERIOD

- AUG 2015 THROUGH FEB 2016 -

Periodo de Construcción

Agosto 2015 HASTA Febrero 2016

Project  
Improvement:  
New Streetlights



### PUBLIC NOTIFICATION:

- 1 to 2 weeks before construction, notices will be distributed to residents, schools and businesses affected by upcoming work.
- **Aviso Publico**  
1 a 2 semanas antes de la construcción, avisos serán distribuidos a las casas, escuelas y negocios afectados por el trabajo.
- Signs will be posted on and around the construction area indicating temporary parking restrictions. "Do not park in restricted areas or your car may be towed."
- Se colocarán letreros en y alrededor de la área de construcción indicando restricciones de estacionamiento temporal. "No se estacione en las zonas prohibidas o su vehículo puede ser remolcado."
- Periodic updates will be provided during construction.
- Se proveerá actualizaciones periódicamente durante la construcción.

# CITY OF CONCORD

## DETROIT AVENUE COMPLETE STREETS

---

# FEDERAL AND LOCAL DOLLARS AT WORK

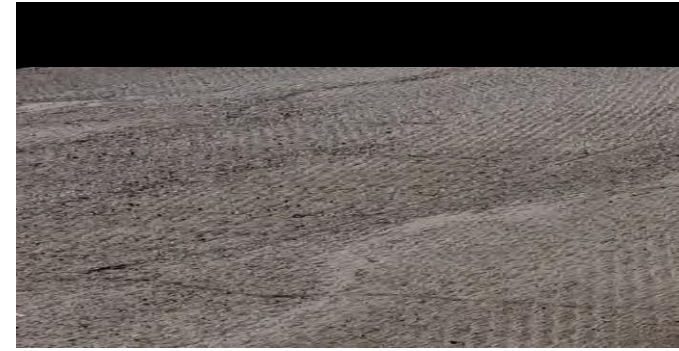
---

- Check the City's website for updates:  
<http://cityofconcord.org/detroitave>
- Visite la página web de la ciudad para más información

### WHATTO EXPECT...

#### DURING CONSTRUCTION:

- Parking and lane closures will be needed during construction. Please be patient and expect delays during construction.
- Cierres de estacionamiento y de calles serán necesarias durante la construcción. Por favor tenga paciencia, vamos a tener retrasos durante la construcción
- Sidewalk closures and pedestrian detours will be needed to facilitate sidewalk and curb ramp installations. **PLEASE DO NOT TOUCH OR WALK IN WET CONCRETE!**  
Para facilitar instalaciones de rampa de acera, se necesitará desvíos a peatones y cierre de aceras. ¡POR FAVOR NO TOQUE NI CAMINE EN CONCRETO FRESCO!
- Prior to resurfacing of the street broken pavement areas will be repaired and cracks filled.
- Previo de tapar el pavimento roto, será reparado y grietas serán llenadas.
- The roadway surface will be ground down to roughen the surface and allow for the thickness of the new paving. During this time, the roadway surface will be rough and uneven.
- La superficie de la carretera será molida para desbastar la superficie y permitir que el pavimento nuevo este más grueso. Durante este tiempo, la superficie de la carretera será desigual.



- **CAUTION!** The area will be a large construction zone. Please pay attention and observe posted construction zone signs and speed limits.
- ¡PRECAUCIÓN! El área será una zona de gran construcción. Por favor, ponga atención y observe los letreros de zona de construcción y los límites de velocidad.

### WHATTO EXPECT...

#### DURING CONSTRUCTION:

- **CAUTION!** Driving on streets before they are open will result in possible defects in the new pavement and paving materials tracked onto your driveway and into your home.
- ¡PRECAUCIÓN! Manejar en las calles antes de ser abiertos resultara en posibles defectos en el pavimento nuevo y el material del pavimento se encontrara en su entrada y dentro de su casa.

Project Improvements: Buffered Bike Lanes



During Construction: Pedestrian Impacts

